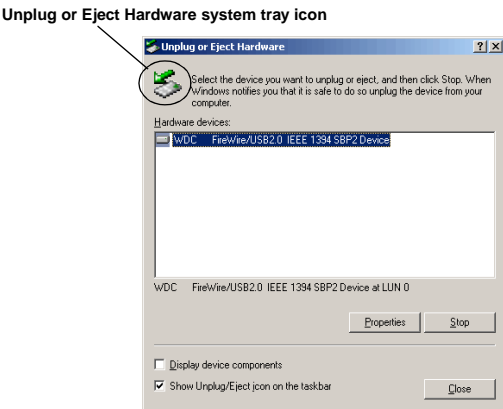


Disconnecting Your WD FireWire/USB 2.0 Combo Drive

CAUTION: Do not disconnect your WD FireWire/USB 2.0 Combo external hard drive before following the steps below as this could result in data loss.

Windows Users

Double-click on the Windows Unplug or Eject Hardware icon in your system tray (located in the bottom right corner of your screen—see the dialog box below for a depiction of this icon). The following dialog box displays:



Select and highlight **WDC FireWire/USB 2.0 IEEE 1394 SBP2 Device** from the list, then click **Stop**. To confirm your selection of the drive to be disconnected, click **OK**. You may now safely disconnect your drive.

Macintosh Users

To unplug your Western Digital FireWire/USB 2.0 Combo external hard drive, drag the hard drive icon over to the Trash/Eject icon. After the disk icon has disappeared from the desktop, you may safely disconnect the drive.

Technical Support Services

If you need additonal information or help during installation or normal use of this product, contact Western Digital Technical Support. When calling for support, please have your drive serial number, system hardware, and operating system version available.

Telephone Assistance

800.ASK.4WDC (800.275.4932)

+31.20.446.7651 (Europe)

Online Services

support.wdc.com

www.westerndigital.com

1-Year Limited Warranty

Western Digital Corporation ("WDC") warrants that the Product, in the course of its normal use, will be free from defects in material and workmanship for a period of one (1) year and will conform to WDC's specification therefor. This limited warranty period shall commence on the purchase date appearing on your purchase receipt.

WDC shall have no liability for any Product returned if WDC determines that the product was stolen from WDC or that the asserted defect a) is not present, b) cannot reasonably be rectified because of damage occurring before WDC receives the Product, or c) is attributable to misuse, improper installation, alteration (including removing or obliterating labels), an accident, or mishandling while in your possession. Subject to the limitations specified above, your sole and exclusive warranty shall be, during the period of warranty specified above and at WDC's option, the repair or replacement of the Product. The foregoing warranty of WDC shall extend to repaired or replaced Products for the balance of the applicable period of the original warranty or ninety (90) days from the date of shipment of a repaired or replaced Product, whichever is longer.

The foregoing limited warranty is WDC's sole warranty and is applicable only to products sold as new. The remedies provided herein are in lieu of a) any and all other remedies and warranties, whether expressed, implied or statutory, including but not limited to, any implied warranty of merchantability or fitness for a particular purpose, and b) any and all obligations and liabilities of WDC for damages including, but not limited to accidental, consequential, or special damages, or any financial loss, lost profits or expenses, or lost data arising out of or in connection with the purchase, use or performance of the Product, even if WDC has been advised of the possibility of such damages.

In the United States, some states do not allow exclusion or limitations of incidental or consequential damages, so the limitations above may not apply to you. This warranty gives you specific legal rights, and you may also have other rights which vary from state to state.

Additional warranty information is available on the Western Digital Web site at support.wdc.com/warranty

Radio Frequency Interference Statement: This device complies with Part 15 of the FCC rules. Operation is subject to the following two conditions: (1) This device may not cause harmful interference; and (2) This device must accept any interference received, including interference that may cause undesired operation. Changes or modifications to this device not expressly approved by Western Digital could void the user's authority to operate the equipment.

Western Digital and the Western Digital logo are registered trademarks of Western Digital Technologies, Inc. Other marks may be mentioned herein that belong to other companies.

©2003 by Western Digital Technologies, Inc. All rights reserved.
Assembled in the USA. with drive manufactured in Malaysia or Thailand.

For service and literature:

Western Digital
20511 Lake Forest Drive
Lake Forest, CA 92630

800.ASK.4WDC USA
+31.20.4467651 Europe
www.westerndigital.com

2079-001038-000
01/03



Western Digital External Hard Drive

FireWire®/USB 2.0 Combo

Quick Install

Hardware Installation and Setup

for your FireWire/USB 2.0 Combo External Hard Drive

1 Getting Started

- **System Requirements:** An available OHCI-compliant FireWire port and/or USB 2.0 or 1.1 port. Macintosh users require system Mac OS v9.X or later and PC users require Windows® 98SE/Me/2000/XP.
- **USB Backward Compatibility:** All current computer systems that have existing USB 1.1 ports can be used with the Western Digital FireWire/USB 2.0 Combo external hard drive. A USB 2.0 PCI adapter card and the included USB 2.0 certified cable are required for Hi-Speed USB 2.0 performance.
- **Record Serial Number:** Write down your Western Digital serial number for setup and technical support purposes. The serial number is located on the bottom of your FireWire/USB 2.0 Combo external hard drive.

WD FireWire/USB 2.0 Combo External Hard Drive Kit Contents



Also included: power cord and Quick Install guide.

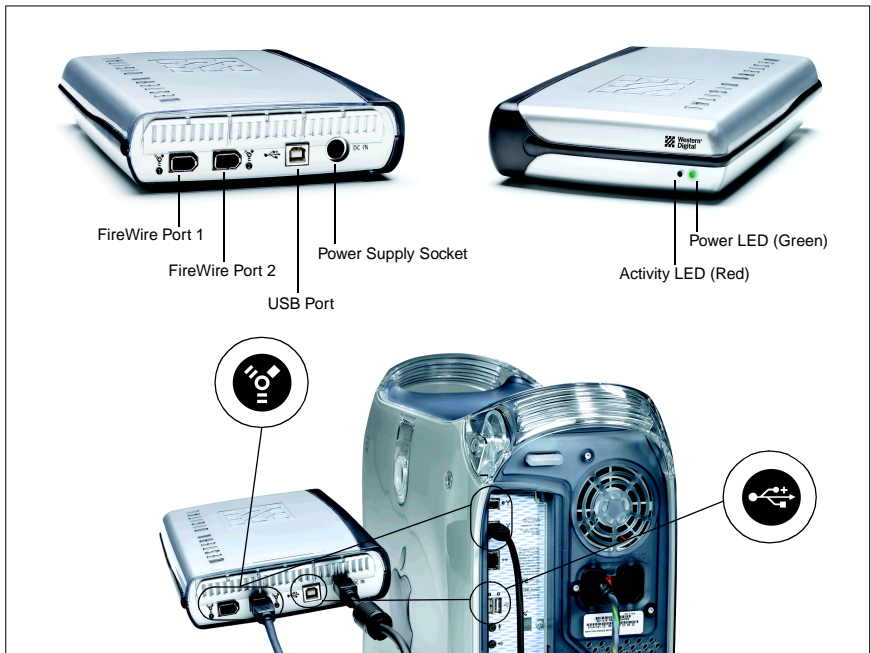
CAUTION: Do not drop or jolt your Western Digital FireWire/USB 2.0 Combo external hard drive or attempt to open the drive and service it yourself. These actions will void the warranty.

2 Connecting Your WD FireWire/USB 2.0 Combo Drive

IMPORTANT: Connect only one interface at a time. If both FireWire and USB cables are simultaneously connected from the drive to the system, the USB connection will take priority and the drive will only be accessible through this interface.

Windows 98SE users only. You must install the drivers on your system prior to connecting the drive. Skip to page 4 for installation procedures.

1. Power on your computer.
2. Plug the end of the power connector with the flat side facing up into the power supply socket located on the back of the drive.
3. With the AC power supply connected, connect the power cord into an available electrical outlet. Verify that the power LED is lit.
4. Connect one end of the FireWire or USB cable into an available FireWire or USB port on your computer.
5. Plug the other end of the FireWire or USB cable into the corresponding interface port on the back of the external hard drive.



WD FireWire/USB 2.0 Combo External Hard Drive Rear and Front Panel
with Installation (FireWire connection shown)

3 Installing the Drivers

Windows Setup

Windows Me/2000/XP

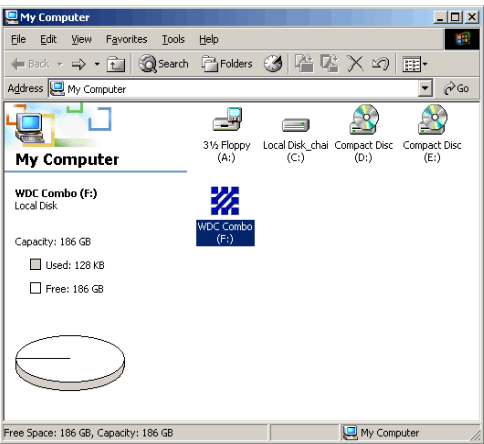
1. After connecting the drive as described on page 2, Windows will immediately detect your Western Digital FireWire/USB 2.0 Combo external hard drive and install the drivers. This may take several minutes.



NOTE: If the above **Add New Hardware Wizard** dialog box appears, select the Recommended option, either to search for a suitable driver or install the drivers automatically, and click **Next**.

2. If prompted, restart your computer. Otherwise, skip to the next step.

3. A new hard drive icon will appear in your **My Computer** window. Your Western Digital FireWire/USB 2.0 Combo external hard drive is preformatted as one FAT32 partition and is now ready to use.



To reformat or partition the drive in Windows 2000 and XP

NOTE: Although your Western Digital FireWire/USB 2.0 Combo external hard drive is preformatted as one FAT32 partition, you may wish to reformat to the NTFS file system or partition the drive into multiple volumes.

1. Right-click on the **My Computer** icon located on your desktop and select **Manage** from the shortcut menu to open the **Computer Management** window.
2. Click on **Disk Management** on the left side of the window.
3. In the bottom half of the window, right-click on the **Unallocated** portion of the drive and select **New Partition** from the shortcut menu.
4. Click **Next** to proceed with the **New Partition Wizard**. You may select the partition file type, specify the partition size, and assign a drive letter or path. **IMPORTANT:** Do not select Dynamic Disk as a partition or volume type, as it will not work for a removable hard drive.
5. Click **Finish** to confirm your settings.

Windows 98SE (Second Edition)

1. Have your Windows 98SE Installation Setup CD ready.
 - a. If using the FireWire interface, Western Digital strongly recommends that you first download the Windows 98SE 1394 Storage Supplement Update. Go to ***support.microsoft.com*** and search for Knowledge Base Article ID Q242975 in the upper left hand corner of the page. Once you have located the article, download and install the update.
 - b. If using the USB interface, go to ***support.wdc.com/download***, locate the corresponding model number for your drive, and download the driver zip file. Carefully follow the install instructions within the file.
2. If prompted, restart your computer. Otherwise, skip to the next step.
3. Plug one end of the power connector into the power supply socket on the back of the drive and the other end into an available electrical outlet.
4. Connect the FireWire or USB cable to the computer and the other end to the corresponding interface port on the back of the drive.
5. For FireWire users, you will see a series of three **Version Conflict** dialog boxes. Click **Yes** in each box to keep your existing files (clicking **No** will prevent the drivers from loading properly). These dialog boxes will only display the first time you connect the drive. Windows will automatically detect the drive and a new hard drive icon will appear in the **My Computer** window. For USB users, Windows will ask for the location of the driver file you previously downloaded.
6. Your Western Digital FireWire/USB 2.0 Combo external hard drive is preformatted as one FAT32 partition and is now ready to use.

Macintosh Setup

Mac OS 9.X

1. Connect the drive as described on page 2.

IMPORTANT: USB 2.0 support is not available on Mac OS 9.X. When connected, the drive will operate at USB 1.1 data transfer rate speeds.

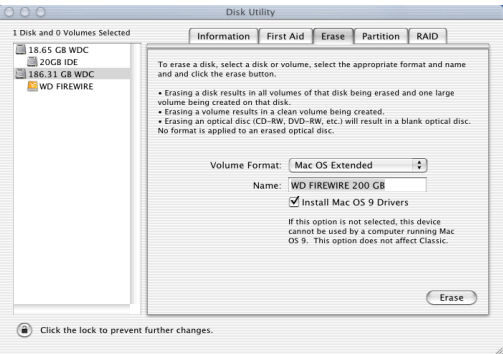
2. A hard drive icon will appear on the desktop. You must reinitialize the drive as Macintosh systems do not have 48-bit addressing support for FAT32 volumes:
 - a. From the **Apple** menu, select **Control Panels > Extensions Manager**.
 - b. Disable **File Exchange** from the extensions list by clearing the adjacent check box and click **Restart**.
 - c. After restart, a message appears asking you to initialize the drive. Enter a name and select **Mac OS Extended** from the menu and click **Initialize**.
 - d. Click **Continue** to confirm drive initialization. A hard drive icon with the name you assigned will appear on the desktop after the formatting process is completed. To re-enable **File Exchange**, select the check box in **Extensions Manager** and click **Restart**. Your newly formatted drive is now ready to use.

Mac OS X v10.X

1. Connect the drive as described on page 2.

IMPORTANT: USB 2.0 support is available on Mac OS X v10.2 (Jaguar). A USB 2.0 PCI adapter card and the included USB 2.0 certified cable are required to obtain data Hi-Speed USB performance.

2. You must reinitialize the drive using Apple's Disk Utility as Macintosh systems do not have 48-bit addressing support for FAT32 volumes. From your existing hard drive, select **Applications > Utilities > Disk Utility**. Select your new drive on the left side and click on the **Erase** tab from the top menu. The following window displays:



3. Select **Mac OS Extended** from the **Volume Format** menu and enter a name for your drive in the **Name** field.
4. Click **Erase** to begin drive format. A hard drive icon with the name you assigned will appear on the desktop after the formatting process is completed. Your newly formatted drive is now ready to use.

NOTE: To partition the drive into multiple volumes, select the **Partition** tab from the Disk Utility program menu and follow the instructions.

4 Registering Your Western Digital Product

Congratulations on the purchase of your Western Digital product. Your new drive includes 90 days of free technical support from the date of purchase. To be eligible for the free technical support and to take advantage of special offers and important product updates, you must register your product with Western Digital.

Register online now at ***www.wdc.com/products/registration***.

###

Regulatory Compliance

FCC Class B Information

This equipment has been tested and found to comply with the limits of a Class B digital device, pursuant to Part 15 of the FCC Rules. These limits are designed to provide reasonable protection against harmful interference in a residential installation. This equipment generates, uses and can radiate radio frequency energy and, if not installed and used in accordance with the instructions, may cause harmful interference to radio or television reception, which can be determined by turning the equipment off and on, the user is encouraged to try to correct the interference by one or more of the following measures:

- Reorient or relocate the receiving antenna.
- Increase the separation between the equipment and receiver.
- Connect the equipment into an outlet on a circuit different from that to which the receiver is connected.
- Consult the dealer or an experienced radio/TV technician for help.
- Any changes or modifications not expressly approved by the manufacturer could void the user's authority to operate the equipment.

The user may find the following booklet prepared by the Federal Communications Commission helpful: "How to Identify and Resolve Radio/TV Interference Problems." This booklet is available from the US Government Printing Office, Washington, DC 20402. Stock No. 004-000-00345-4.

CSA Notice

Le prent appareil numérique n'émet pas de bruits radioélectriques dépassant les limites applicables aux appareils numériques de la classe B prescrites dans le Règlement sur le brouillage radioélectrique édicté par le ministère des Communications du Canada.

This digital apparatus does not exceed the Class B limits for radio noise for digital apparatus set out in the Radio Interference Regulations of the Canadian Department of Communications.

Underwriters Laboratories

UL-Standard 1950, Standard for Safety of Information Technology Equipment including Electrical Business Equipment (File E101559).

CE Compliance For Europe

Verified to comply with EN55022:1998 for RF Emissions and EN55024:1998 for generic Immunity as applicable.